

Circuit Diagram
Admiral 35
Model: ADM35D



Valid from: August 05, 2007
 Updated: September 21, 2010

Electrical parts reference list for Admiral 35.
 Refer to parts manual for detailed assembly drawing.
 X part numbers for connectors reference the components side only.

Ref.	Description	Part Number	Path
A1	Control unit (electronic module only), function control	01175790	1.17
A2	Module 1, power motors	00752920	2.8
A3	Standard control panel (electronic module only)	00712220	1.11
	Complete control panel for plate brush comprising: control unit (A1 electronic module), and control panel (A3 electronic module, plate and foil)	97053177	1.11
A4	Drive controller	01055000	1.34
A5	Module 2, sweeping (pre-sweep OPTION-7604)	00712200	2.28
B1	Alarm (Piezo buzzer) (signal transmitter)	00745850	1.26
F1	Fuse, 125A- Main	00059580	1.35
F2	Fuse, 63A- Drive control	01056100	1.37
F3	Circuit Breaker, 10A- Broom motor (Pre-sweep OPTION-7604)	00041140	2.36
F4	Fuse, 10A- Horn	00733630	1.29
F5	Fuse, 5A- Control input – key on	00906120	1.27
G1	Battery 24V (standard), Wet 6V 275Ah (4 required)	956747	1.3
G1	Battery 24V (optional), Wet 6V 325Ah (4 required)	956744	1.3
H1	Horn	00852420	1.27
K1	Relay, Main	00965030	1.5
M1	Drive motor	00671800	1.36
M1.S1	Thermal switch, drive motor	part of M1	1.37
M2	Water pump	90329095	2.2
M3	Vacuum motor (suction turbine)	00543510	2.23
M4	Brush motor 1, left side	00671800	2.20
M4.S1	Thermal switch, brush motor 1, left side	part of M4	2.21
M5	Brush motor 2, right side	00671800	2.26
M5.S1	Thermal switch, brush motor 2, right side	Part of M5	2.27
M6	Actuator, brush deck (regulating motor)	01074350	2.12
M7	Broom motor (Pre-sweep OPTION- 7604)	00981100	2.37
M8	Actuator, squeegee (lifting element)	00712430	2.23
R1	Drive potentiometer	00712190	1.32
R2	Terminating resistor CAN bus 120Ω	90266925	1.13
R3	Terminating resistor CAN bus 120Ω	90266925	2.5
S1	Key Switch	90323437	1.9
S2	Parking brake switch (stop light switch) (micro switch)	00975510	1.2
S3	Seat switch (contact switch)	00905240	1.29
S6	Brush pressure switch (micro switch)	00975510	1.2
S9	Float switch, Recovery tank (soiled water)	00861620	2.32
S10	Horn button (push button switch)	00133770	1.31
V1	Diode, Recovery for horn	90194879	1.26
V2	LED diagnosis drive control	01075430	1.38
V3	Diode, A1 control until on circuit	90194879	1.26
X1	Battery connector, 175A (2 per machine)	00954520	1.1
X2	Connector, 4 pin- Pre-sweep (Pre-sweep OPTION- 7604)	00059760	2.37
X3	Connector, 2 pin- Actuator brush deck (lifting element)	19791128	2.10
X4	Connector, 2 pin- Float switch, (female)	19791128	2.31
	RED= NON-Stock Item		

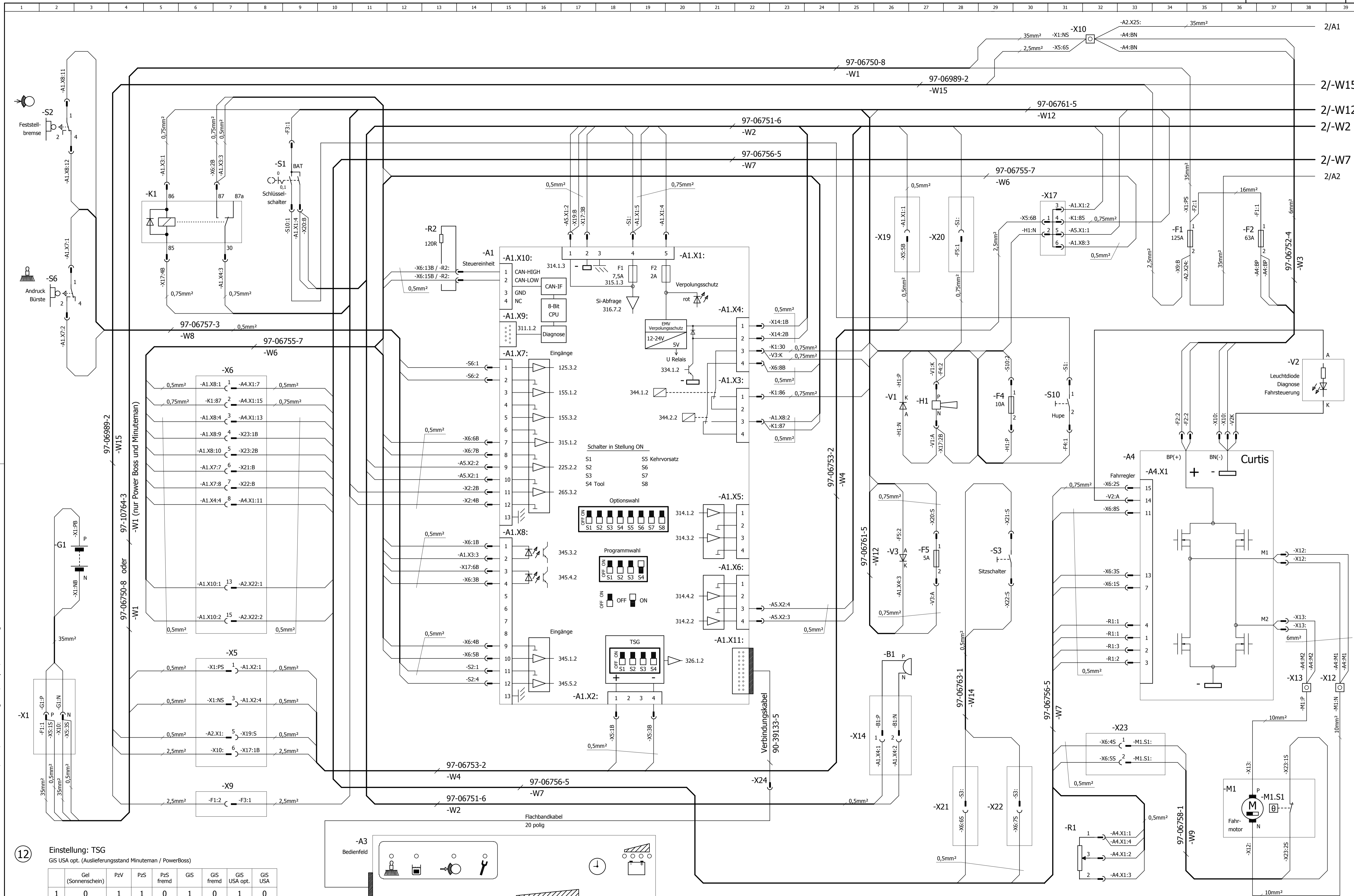
Circuit Diagram
Admiral 35
Model: ADM35D



Valid from: August 05, 2007
 Updated: September 21, 2010

Electrical parts reference list for Admiral 35.
 Refer to parts manual for detailed assembly drawing.
 X part numbers for connectors reference the components side only.

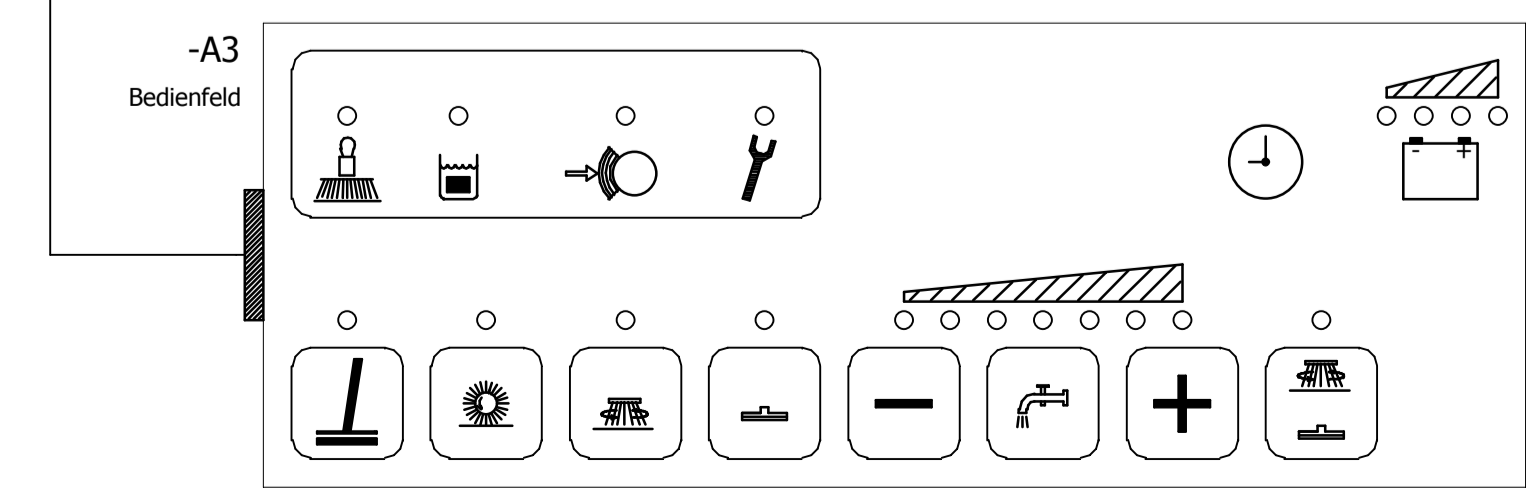
Ref.	Designation	Part Number	Path
X5	Connector, 6 pin		1.7
X6	Connector, 15 pin		1.7
X7	Connector, 2 pin- Vacuum motor (suction turbine) (female)	19791128	2.20
X8	Connector, 2 pin- Actuator squeegee (lifting element)	19791128	2.21
X9	Connector, 1 pin- F3 broom motor M7 (pre-sweep OPTION- 7604)		1.7
X10	Connecting stud, Negative potential	00744670	1.32
X11	Connector, 2 pin- Thermal switch-brush motors	19791128	2.29
X12	Connecting stud, M1 N	00152830	1.39
X13	Connecting stud, M1 drive motor P	00152830	1.38
X14	Connector, 2 pin- Alarm (Piezo buzzer) (signal transmitter)	19791128	1.25
X15	Connector, 1 pin- Water pump (female)	19791037	2.4
X16	Connector, 1 pin- Water pump (male)	19791029	2.4
X17	Distribution block, Negative potential	00981100	1.31
X19	Connector, 1 pin		1.26
X20	Connector, 1 pin- Control input – key on		1.28
X21	Connector, 1 pin- Seat switch	19791037	1.28
X22	Connector, 1 pin- Seat switch	19791037	1.29
X23	Connector, 2 pin- Thermal switch- drive motor	19791128	1.33
X24	Connector, Ribbon cable (A1 to A3)	01076630	1.22
Y1	Water valve	90435595	2.15
	RED= NON-Stock Item		



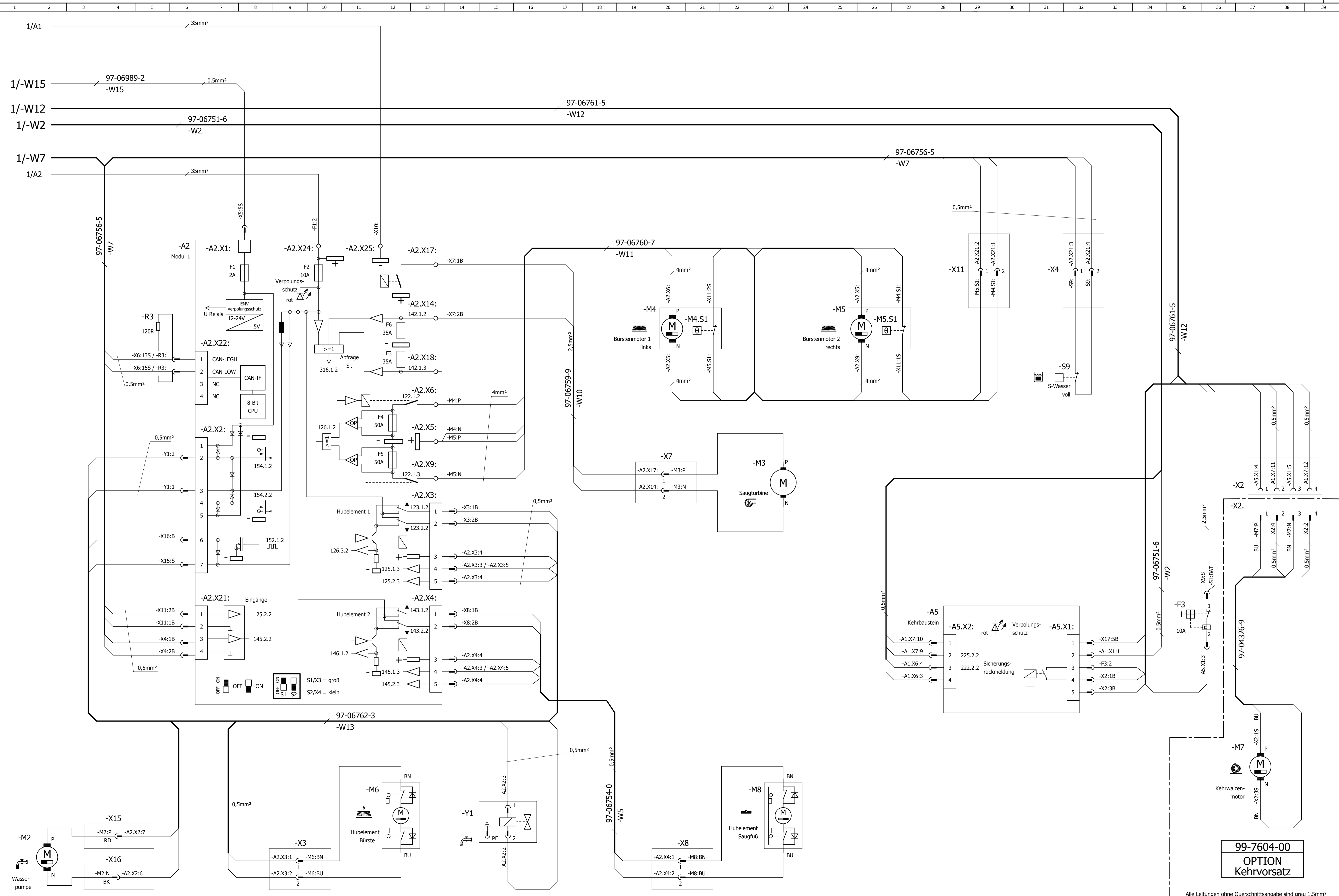
PLOT DATUM : 30.06.2009 B-Stand : 013 / WI. / 24.06.09 [014 / kupe / 24.06.09]

12 Einstellung: TSG
GIS USA opt. (Auslieferungsstand Minuteman / PowerBoss)

	Gel (Sonnenschein)	P2V	P2S	P2S fremd	GIS	GIS fremd	GIS USA opt.	GIS USA
1	0	1	1	0	1	0	1	0
2	1	1	0	0	1	1	0	0
3	1	1	1	1	0	0	0	0
4	ON = 24V / OFF = 36V							



=	12	1x	1658-01	24.06.09	Wi.	1999	Datum	Name	VES-Nr. :	Benennung CIRCUIT DIAGRAM ADMIRAL 35	Zeichnungs-Nr. 91018630
	Nr.	Zahl kommt vor	Änd.-Nr.	Datum	Name	Normgepr.			Änd. Nr. : 1436-00		
+	Typ: 7744 Alle Leitungen ohne Querschnittsangabe sind grau 1,5mm² PowerBoss										



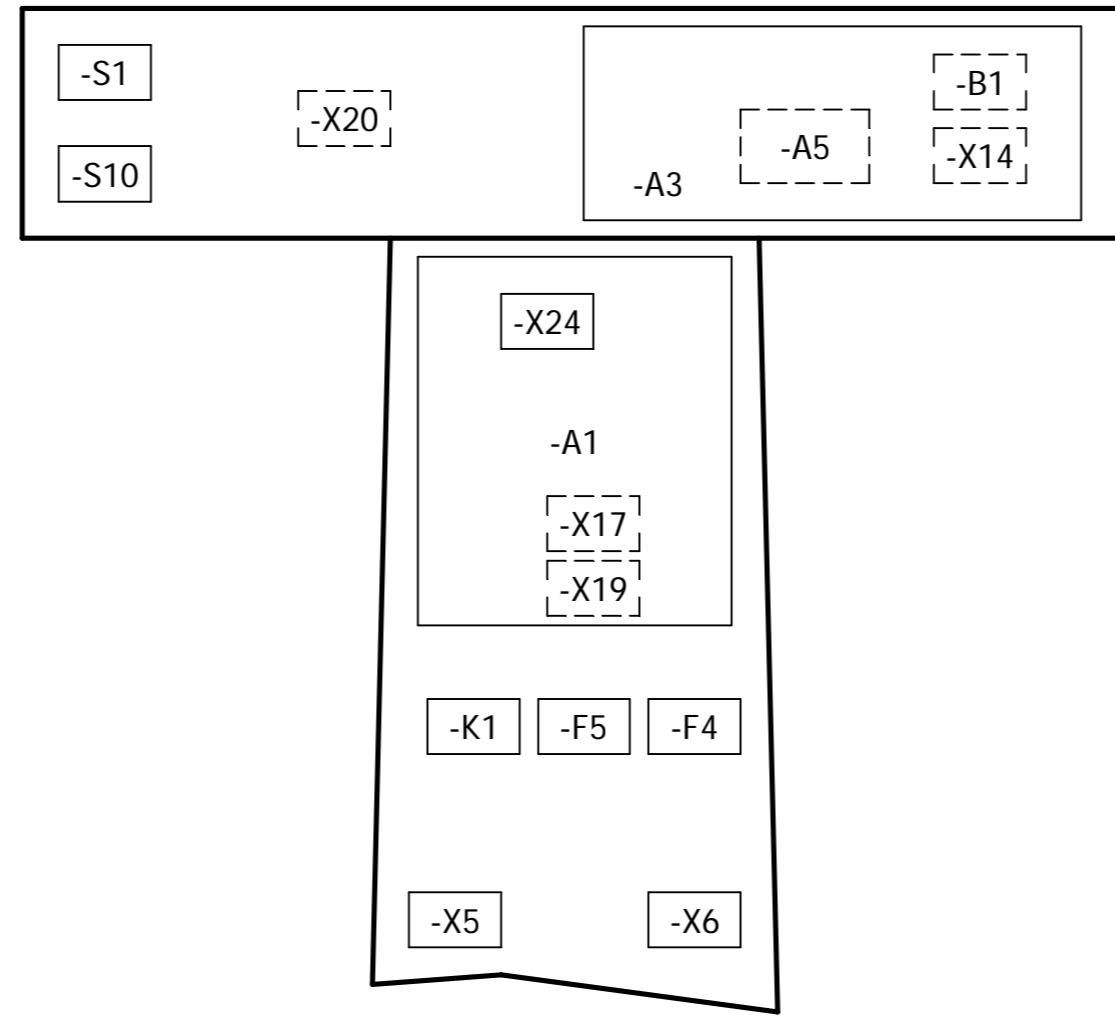
PLOT DATUM : 30.06.2009 B-Stand : 013 / Wi. / 24.06.09 [014 / kupe / 24.06.09]

Alle Leitungen ohne Querschnittsangabe sind grau 1,5mm²

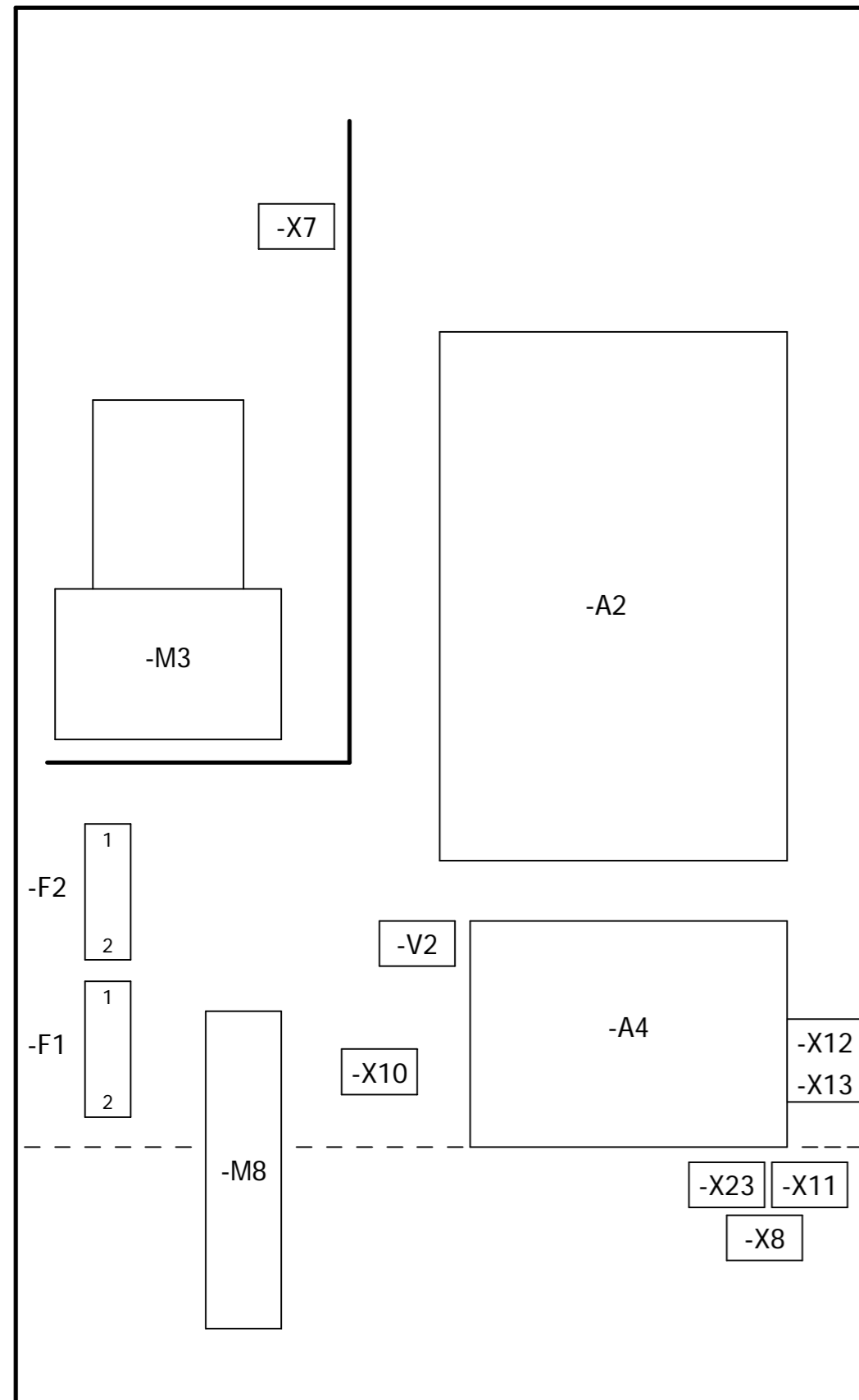
=	12	J.	1658-01	24.06.09	Wi.	1999	Datum	Name	VES-Nr. :	Benennung	 Zeichnungs-Nr. 91018630
	+	Nr.	Zahl kommt vor	Änd.-Nr.	Datum	Name	Normgepr.	Gezeichnet	25.06.	kupe	
										CIRCUIT DIAGRAM ADMIRAL 35 Für diese Zeichnung behalten wir uns alle Rechte vor. (Gemäß DIN 34)	Typ: 7744 Blattzahl: 4 Blatt: 2

99-7604-00
OPTION
Kehrvorsatz

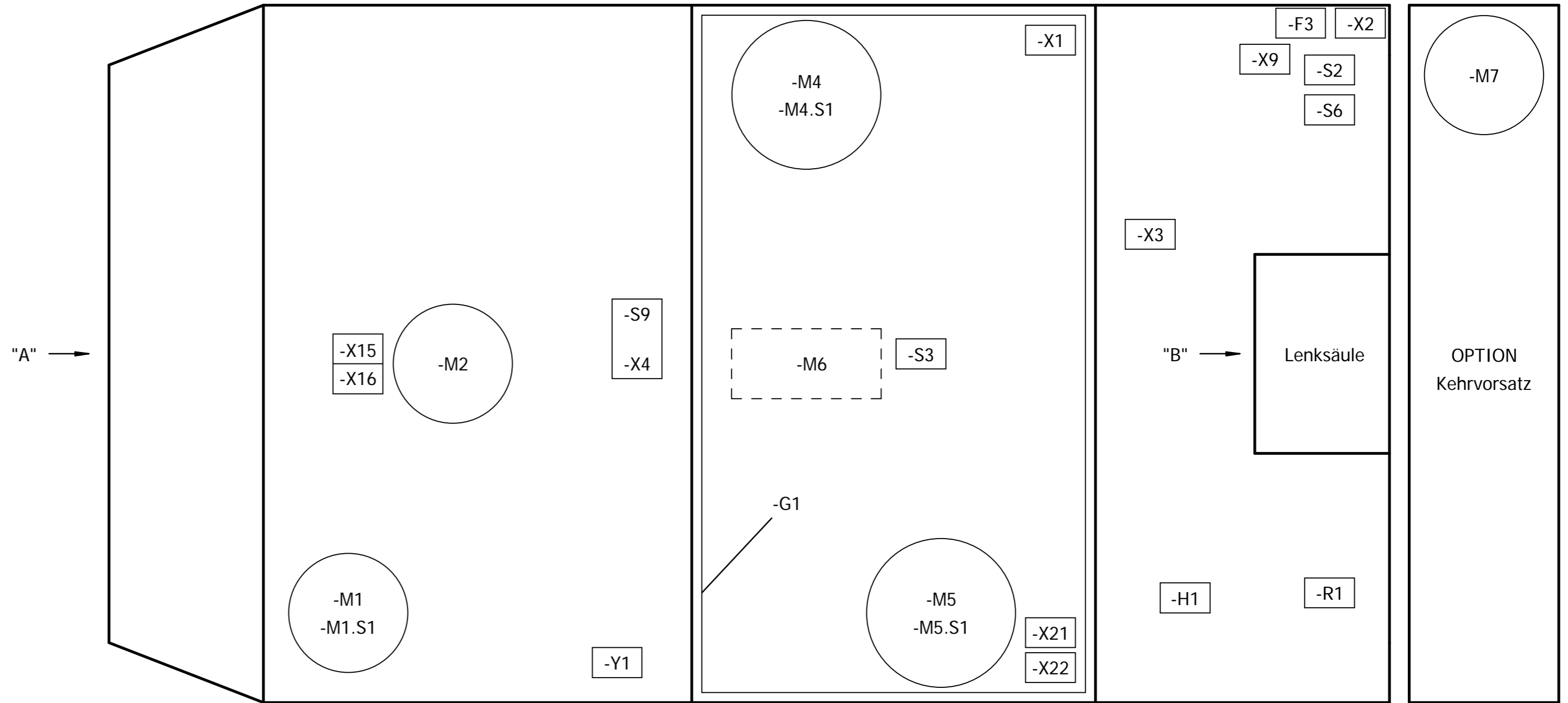
Lenksäule
Ansicht "B" und Draufsicht



Ansicht "A"



Fahrerichtung →



PLOT DATUM : 30.06.2009 B-Stand 013 / Wi. / 24.06.09 013 / kupe / 24.06.09

A2

=	12	./.	1658-01	24.06.09	Wi.	1999	Datum	Name	VES-Nr. :	Benennung			Zeichnungs-Nr.			
	+	Nr.	Zahl kommt vor	Änd.-Nr.	Datum	Name	Normgepr.	Gezeichnet	25.06.	kupe	Ersatz für:		GI.Nr.	91018630		
										Änd. Nr. :	1436-00	Für diese Zeichnung behalten wir uns alle Rechte vor. (Gemaß DIN 34)		Typ: 7744	Blattzahl: 5	Blatt: 5